



^

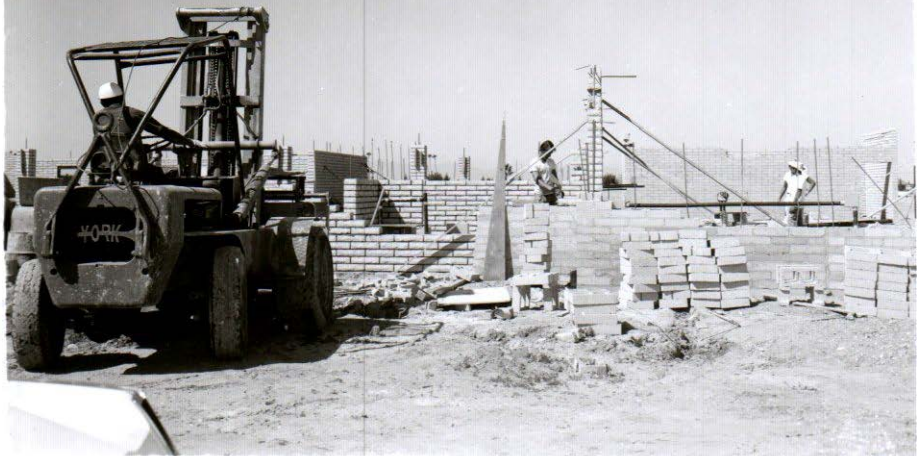
v

← 3 1/2" →

6.
Our Saviour Angelical
Lutheran
~~Catholic~~ Church

9/22/73

2690





B4 NEWS-SUN SATURDAY, MAY 2, 1987

Nitz enjoys personal touch at Our Savior church

By DAN BURNETTE
News-Sun staff

SUN CITY — The most conservative Lutheran denomination is also the newest denomination.

The Wisconsin Synod broke fellowship with the much larger Missouri Synod of the Lutheran Church in 1961, when some members of the church felt congregations were straying too far from a conservative doctrine, says the Rev. Frederic Nitz.

Nitz is pastor of Our Saviour Evangelical Lutheran Church, 9825 N. 103rd Ave., one of some 1,200 congregations across the United States affiliated with the Milwaukee-based Wisconsin Synod.

"We are the most conservative of the Lutherans," Nitz says. "We believe the

Bible is absolutely inerrant and all doctrine and practice is based on a literal interpretation of the Bible."

Services at Our Saviour, like other Wisconsin Synod-affiliated churches, are liturgical, which means a formal program of song, sermon and prayer. Our Saviour uses the Lutheran Church Hymnal established in the 1940s.

The congregation at Our Saviour was established in 1972 and in April 1973 dedicated its edifice.

The original membership of 60 people has since doubled, so a parish hall was added to the east end of the church in 1984.

In addition to the 120 fulltime members, the church serves about 30 to 40

'We believe the Bible is absolutely inerrant and all doctrine and practice is based on a literal interpretation of the Bible.'

associates who visit for several weeks or months in the winter but maintain memberships in their hometowns.

The church is governed by a nine-person board, elected by the members to staggered three-year terms.

Nitz has been pastor at Our Saviour since 1978. He previously pastored a

congregation of 900 people in Minnesota, but he says he likes the smaller group because "it's more personal."

He said he initially wondered what it would be like serving a congregation made up entirely of retirees, but he says he found the members to be a "lively and active group."

Still, he says he finds the hardest part of his job is ministering an average of six funerals a year among congregation members.

"It's hard getting to know people for a relatively short length of time and then they're gone," Nitz says.

There are about 15 Wisconsin Synod-affiliated Lutheran churches in the Valley. Together the congregations support

the Arizona Lutheran Academy, a religious school serving about 200 students. Nitz says Our Saviour members are enthusiastic supporters of the school, even though none has any children attending.

Nitz also has other duties besides pastoring at Our Saviour, including missionary work with the Apache nation.

Services at Our Saviour are at 9 a.m. Sunday. There's also a Monday morning Bible class, and during Lent and Advent seasons there are special services on Wednesdays at 2 p.m.

The membership meets about once a month for fellowship and dinner. The Ladies Guild and Mission Service also have monthly meetings.