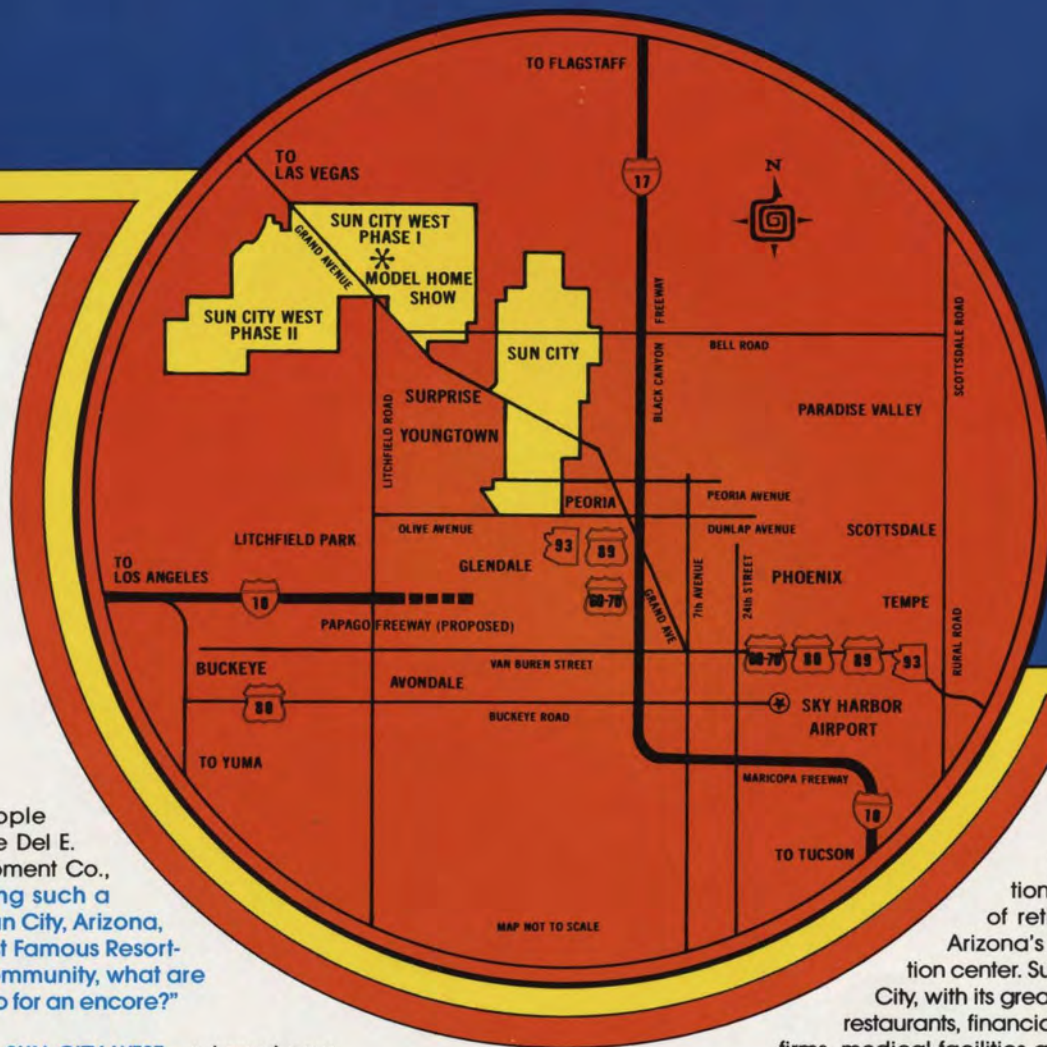


Standard of the World in Resort Retirement Living



For years, people have asked the Del E. Webb Development Co., "After producing such a smash hit as Sun City, Arizona, America's Most Famous Resort-Retirement Community, what are you going to do for an encore?"

THE ANSWER IS SUN CITY WEST... a brand new resort-retirement community just 2½ miles west of beautiful Sun City, Arizona. In just over eighteen years, Sun City has become a major metropolitan center, and one of the few communities in the world with nearly all remaining residential property

spoken for. By late 1978, Sun City had, in fact, reached its population goal of 48,000 people of retirement age, making it Arizona's seventh largest population center. Such close proximity to Sun City, with its great array of stores, services, restaurants, financial institutions, professional firms, medical facilities and houses of worship, is an immediate advantage to residents of Sun City West.

"RESIDENTS OF BOTH COMMUNITIES SHARE AN IMPRESSIVE ARRAY OF CULTURAL PLEASURES"

Concerts by the nationally-acclaimed Sun City Symphony Orchestra

THE SUN CITY WEST LIBRARY BUILDING. A handsome edifice with a soaring Spanish bell tower houses administrative offices for the community library, a beautifully furnished reading room, and stack accommodations for 40,000 volumes.



Cover Photo & above: The magnificent Sundome, Center for the Performing Arts seats 7,169 theater-goers in lavish, air-conditioned comfort. Performers rate the sound system as one of the finest in the country. The continuous entertainment schedule has something for everyone—Lawrence Welk, Bob Hope, The Mills Brothers, Pearl Bailey, Don Ho, Red Skelton, Victor Borge to name just a few... for the classical buffs: The Irish Light Orchestra of Dublin, Slovenian Symphony (oldest in the world), National Folk Ballet of Yugoslavia, Hartford Ballet... Broadway Shows: American Dance Machine, Whoopee, Babes in Toyland, Music Hall Follies... Lecture Series features Paul Harvey, Art Buchwald, Peter Duchin, the Amazing Kreskin.

It's entertainment-plus for Sun City and Sun City West residents!

featuring renowned soloists • Fine Art Series Recitals • Lectures by world-famous authorities • The Sun City branch of the distinguished Phoenix Art Museum • Sun City Campus of Rio Salado Community College...and...The new gigantic **SUNDOME, Center for the Performing Arts in Sun City West.**

WE WISH YOU COULD HAVE BEEN HERE FOR THE HISTORIC SUN CITY WEST GROUNDBREAKING.

Sun City West will include 13,000 acres (as compared to 8,900 acres in Sun City). Groundbreaking for Phase I (comprising 5,700 acres for a projected population of 32,500) was celebrated on February 15, 1978 with Arizona Governor Wesley Bolin, U.S. Senator Dennis DeConcini, officials of the Del E. Webb Corporation, Del E. Webb Development Co., J.G. Boswell Co. and many of the 6,000 plus couples who had already registered their wish to purchase homes in Sun City West,

wielding souvenir shovels.

Sun City West is following in Sun City's giant footsteps to set ever new world standards in resort-retirement living. As in Sun City, the Sun City West concept is that of a complete urban environment tailored expressly to the needs and desires of people 50 years of age or over. An environment having the recreational amenities, the scenic interest and the climate of the world's greatest resorts...and yet, having all the things necessary and desirable for year 'round living. It was Del Webb's dream that such an environment could be made available and affordable to people no longer subject to the "eight to five" routine. Sun City made that dream come true for many and now Sun City West is making it come true for you.

NOW FOR A PREVIEW OF THE ADDITIONAL ADVANTAGES ACCRUING TO SUN CITY WESTERNERS AS THEIR SUN RISES IN THE WEST!



DEL E. WEBB DEVELOPMENT CO.
 An organization of men and women dedicated exclusively to the total development of superior living environments for people of retirement age. Top Left Photo: John W. Meeker, President. Second Photo: Kenneth S. Parker, Sr. V.P., Sales with George S. Flagler, V.P., Residential Architecture.



SUN CITY WEST, PHASE I

The core area of Sun City West, Phase 1, is planned so that all Sun City Westerners will live within bicycle, golf cart (or, in many instances, even walking) distance of facilities designed to satisfy every daily need, and foster a richly rewarding recreational, social and cultural life. This is precisely what Mr. Webb meant by "Resort-Retirement Living!"

Provisions for Houses of Worship. Throughout Sun City West, key sites are being reserved so that the various religious denominations may build houses of worship in convenient proximity to the homes of their members as they become residents of the community. In like manner, Sun City congregations built twenty-four of Arizona's most handsome houses of worship. A number of Sun City West congregations are holding services in the R. H. Johnson Recreation Center Social and Lecture Halls as their building committees work on architectural plans.

GOLF...THIRD 18 ALREADY IN PLAY, EVEN MORE PROJECTED

Hillcrest Golf Course... 2½ million yards of earth were moved to create this rolling emerald valley... So challenging, it has twice been selected by the L.P.G.A. as a major tournament course (the second \$100,000 LPGA Sun City Classic will be played there March 11-15, 1981). Presently open to Sun City West residents and visitors on a pay-as-you-

play basis. Residents have two additional options: **Pre-Paid Greens Fees** (for all but 30 dates, to be announced, per year) and **On-Course Permits** for personal golf carts.

Pebblebrook Golf Course... Meanders gracefully through Sun City West's beautifully established residential neighborhoods, providing idyllic vistas for the homes that border fairways, reserved exclusively for Sun City West residents on a daily or annual pre-paid greens fee basis. Personal golf cart permits are available and reciprocal (as are its annual pre-paid greens fees) with course No. 3, "Stardust!"

Stardust Golf Course... Our sporty "Executive 18" opened in November, 1980. Play is reserved for residents only on the same basis as Pebblebrook.

Briarwood Country Club is currently in design to be a luxurious private facility...with golfing, swimming, dining and social amenities for its members. Contact your Sun City West Sales Counselor early for particulars of membership as the number is limited by charter.

Hillcrest Golf Course is a property of Del E. Webb Development Co. Pebblebrook and Stardust are to be owned by Recreation Centers of Sun City West, Inc.

LPGA SUN CITY CLASSIC

Resort to the Finest.

DEL WEBB HOTELS

Mint Hotel

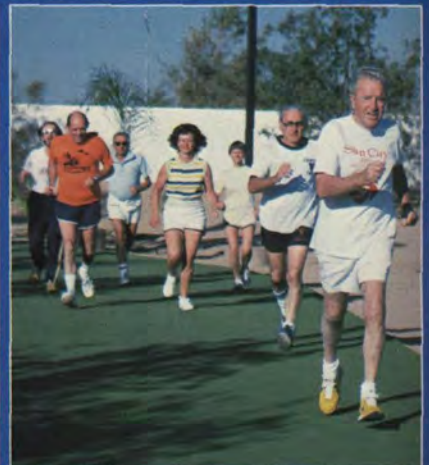
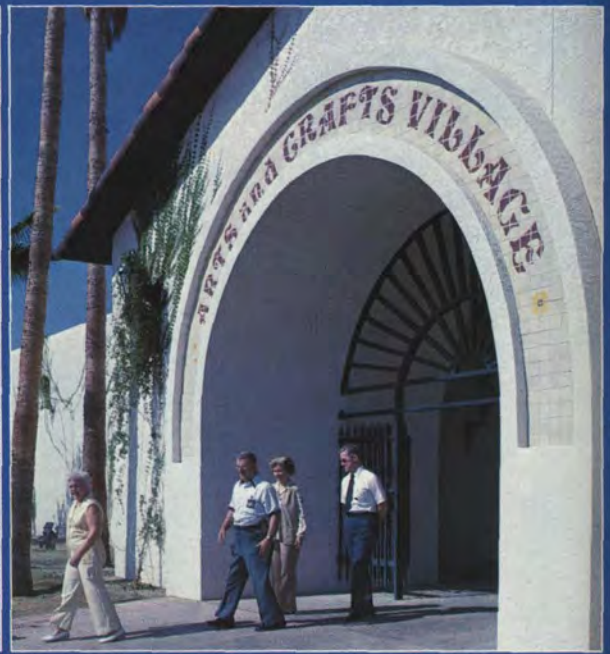
Las Vegas, Nevada
(702) 385-7440

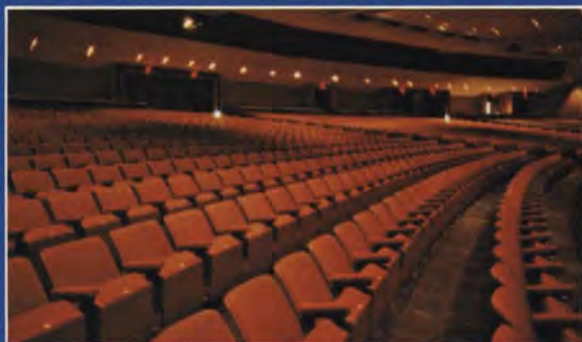
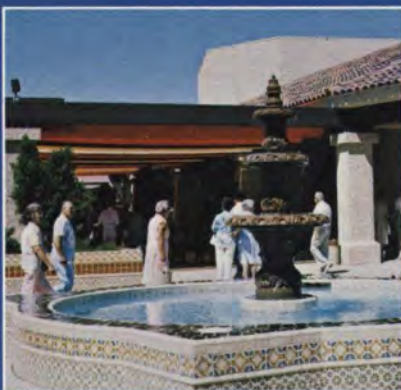


1. Aerial view of Hillcrest Golf Course and Pro Shop
2. Jan Stephenson, winner of the 1980 \$100,000 LPGA Sun City Classic.
3. R. H. Johnson, Pres. of Del E. Webb Corp., chats with a team-mate, Nancy Lopez-Melton.
4. Jan Stephenson receives her "Check" from Senator Dennis De Concini, John Byrne, Assist. Tournament Director and John W. Meeker, Tournament Director & Pres. of Del E. Webb Development Co.



SUN CITY WEST VACATION HEADQUARTERS. This handsome building adjacent to a 326-unit Vacation Apartment complex is the new gateway to Resort-Retirement Living for guests under the Sun City West Vacation Program. It contains the beautiful new Crestview Restaurant, and like the vacation apartments above, adjacent to the Hillcrest Golf Course.





DESIGNED IN SPANISH COLONIAL STYLE... R. H. Johnson Recreation Center sets the charming architectural motif for all buildings in the core area.

On a rise overlooking Hillcrest Golf Course, with a spectacular view of the Bradshaw Mountains, is Sun City West's R.H. Johnson Recreation Center...the largest private complex for recreational sports, physical conditioning and arts and crafts in the Southwest. It is named to honor the President of the Del E. Webb Corporation. Every Sun City West homeowner enjoys Recreation Center Membership, but you will be surprised how the low annual dues are. (photos opposite)

Arts & Crafts Complex: Sun City West arts & crafts devotees delight at studios and workshops equipped to highest professional standards for ceramics, silvercraft, lapidary work, painting, sewing, weaving, wood-working and many other popular creative activities. A special feature is an amphitheatre-type lecture hall for crafts instruction.

Social Hall...a 1,000-seat ballroom that can be divided into two generous meeting rooms, with adjoining serving kitchen.

Sports Facilities...a 100-foot swimming pool with diving tank and cabanas
 • Revolutionary outdoor Jacuzzi pool • 2 lavish indoor therapy pools
 • Physical fitness room featuring a 9-station multi-purpose exercise machine • 14-lane bowling pavilion with automated scoring system

R.H. JOHNSON RECREATION CENTER IS A PROPERTY OF RECREATION CENTERS OF SUN CITY WEST, INC. a non-profit association of all Sun City West homeowners.

• 25-table pool and billiard hall • 10 indoor shuffleboard courts • A table tennis gallery • 8 platform tennis courts • 15 regulation tennis courts • 2 handball courts • Volleyball and badminton courts • 4 regulation grass bowling greens • 2 boccie courts • 18-hole miniature golf course.

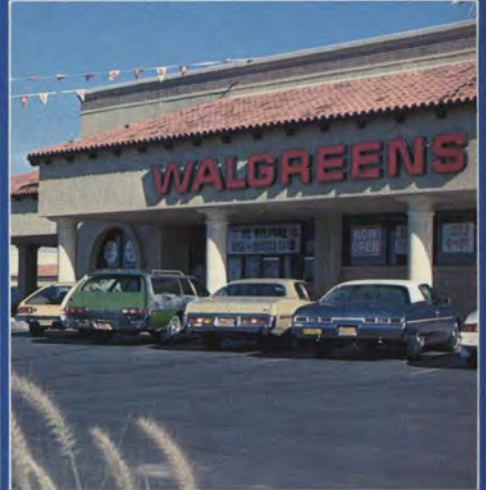
It even has...a ¼-mile running track with special resilient surface and a challenging obstacle course.

AND certain to evoke fond memories...an old-fashioned croquet court • AND a "Roarin' Twenties" electric game arcade.

THE SUNDOME, A 7,169-SEAT CENTER FOR THE PERFORMING ARTS.

Arizona's largest theatre is a multi-purpose auditorium in the very best sense...a huge hall that will not only accommodate virtually every type of musical or theatrical event, but also enhance each event specifically. It has deeply cushioned, ramped continental seating for optimum visibility and ease of access. A highly sophisticated sound control system gives every seat in the house the same audio presence as front row center. A great forecourt, flanked by charming garden alcoves, is the perfect place to meet friends at exhibitions before curtaintime, during intermission, or after theatre. The current Sundome Season offers over 120 shows, concerts and lectures featuring scores of the world's most celebrated performers and personalities (photos above).

SUNDOME CENTER FOR THE PERFORMING ARTS IS A PROPERTY OF DEL E. WEBB DEVELOPMENT CO. and is open to the general public.



THE COMMERCIAL CORE OF SUN CITY WEST... is located across R. H. Johnson Boulevard from this vast complex of community buildings. A gigantic commercial reserve assures the central location of sites for restaurants, financial institutions, professional buildings, medical centers, and automotive sales and service facilities. All are being developed with as much attention to architectural detail and landscaping as the surrounding homes and community buildings. In the core area, the first of three large neighborhood shopping plazas projected for Sun City West is already open. It provides easy access for shoppers and diners, whether they arrive by bicycle, golf cart or automobile, and a delightful array of stores, specialty shops and services.

HEALTH CARE FACILITIES—Walter O. Boswell Memorial Hospital (in Sun City). Sun City and Sun City West constitute the primary service area for this great medical-surgical institution. It is nationally recognized for its exemplary design and for its distinguished staff of over 200 physicians and surgeons, many of whom have offices in the Lakeview and Thunderbird Medical Arts Centers that border the hospital complex.

ENCORE

Featuring Built-in Energy Efficiency*

The SUN CITY WEST MODEL HOME COLLECTION

MODE 1 SINGLE-FAMILY HOMES

For each of the ten floor plans there is a choice of three front elevations, each offered in a wide variety of masonry facings and exterior color schemes. In short, you may not only select the floor plan that best suits the needs of your household, but you may also personalize the exterior of your home. This is the mode of the individualist. The interiors are a homemaker's dream. Spacious rooms, generous storage space, all-electric kitchens, year 'round air-conditioning...everything you could desire for personal comfort and convenience. Perfect for entertaining, too. Browse through these delightful models, and you'll surely find the home you have always wanted.

MODE 2 DUPLEX HOMES

Our approach to the duplex home is unique. These handsome residences have just as much individual character as our single family homes. Grouping these spacious floor plans in pairs creates the effect of unusually large and luxurious houses. The exterior architectural treatment and color schemes are varied to create interesting streetscapes.

The rear grounds blend together to provide great open vistas.** In front the trees and shrubs are grouped to provide each home with an inviting entrance. Free from outdoor chores, Duplex homeowners have the opportunity to enjoy Sun City West's resort facilities to the fullest.

MODE 3 GARDEN APARTMENT HOMES

These charming apartments are grouped around spacious common courtyards.** Individual comfort, convenience, and privacy are major design considerations. Each apartment has its own walled sun court and an attached garage. Mode 3 is carefree too because you are free from concern about exterior building maintenance tasks and lawn chores. With four generous floor plans to choose from, you'll find a Garden Apartment Home that will fit you to a tee.

MODE 4 PATIO APARTMENT HOMES

With handsomely appointed common grounds,** and no exterior maintenance tasks to concern the owner, a Patio Apartment is the perfect setting for the relaxed way of life characteristic of Sun City West. Each apartment has a covered lanai opening onto a private courtyard for outdoor entertaining. Inside, space flows freely through generous rooms with shapes varied to inspire dramatic decorative schemes, and provide a delightful surprise at every turn.

***In MODES 2, 3 and 4,
common grounds are landscaped with trees,
shrubs, decomposed granite and/or gravel.*

QUALITY FEATURES & PRODUCTS

Comprehensive investigation by Webb experts into the merits of materials, systems and products insures that every Sun City West home meets the most exacting requirements for durability, economy of maintenance and lasting aesthetic appeal. Selected on these criteria, the following materials and appointments typify the quality inherent in *SUN CITY WEST HOMES*.

*ENCORE FEATURES ENERGY EFFICIENCY (included in basic price of every ENCORE model)

- All-season comfort control including both year 'round, electric heat pump air-conditioning and separate evaporative cooling unit.
- Insulation in all exterior walls, carport (or garage) partitions, and in all interior, lanai and carport (or garage) ceilings.
- Dual glazed sliding glass doors (and sidelights where shown).
- Double window units
- FORD SUNGLAS™ in windows and sliding glass doors.
- Solar domestic water heating system with roof-mounted energy collectors and 82-gallon storage tank, containing electric stand-by element.
- Textured Masonite hardboard exterior siding.
- Genuine face brick veneers and ornamentation where indicated on the exterior (owner's choice of several brick colors in the case of single-family homes).
- 235-pound asphalt shingles nailed and tabbed standard on 4/12 trussed roofs. (Subject to availability, Cedar Shakes, Mission Tile, or Cement Tile available at extra charge on certain models).
- Window and sliding glass door frames are of aluminum, electrolytically enamelled dark brown.
- Nylon carpet (choice of colors) in: living rooms, formal dining rooms, bedrooms, dressing areas, halls and foyer of H-789.
- Sheet vinyl floor covering (choice of colors and patterns) in: foyers, Arizona rooms, kitchens, breakfast areas and baths.
NOTE: Dining areas and closets have floor covering to match the areas they adjoin.
- Choice of decorative wall coverings in all baths.
- Maintenance-free, vinyl-clad doors, door frames and baseboards in a choice of white or pecan-grained finishes.
- A choice of decorator-coordinated lighting fixture groups.
- Laminated-plastic counter tops with rolled edges in a choice of colors and patterns in kitchens.
- Laminated-plastic kitchen cabinet faces in a choice of color-accented white or pecan-grained finishes. With the pecan, reversible panels are included in upper cabinet doors with one side to match the kitchen appliance color.
- General Electric kitchen appliances (as listed in this book under each model number) in a choice of colors with Nutone exhaust hood to match.
- A choice of cast iron or stainless steel kitchen sink with single-lever faucet and garbage disposer.
- American Standard 6-foot fiber glass tub/shower with ceiling dome, integral seat, single-lever valve and deluxe shower head (plus similarly appointed 5-foot stall shower where Bath 2 is indicated).
- American Standard genuine vitreous china lavatory in bath(s) with accessory shelf.
- Boutique sinks in specified dressing areas (see individual plans).
- American Standard wall-hung elongated water closet(s).
- Rough-in for laundry tray and water softener in utility room.
- Pre-wired outlets for color television complete with roof jack and antenna.
- All models having garages include electronic door opener with vacation shut-off switch.

OPTIONAL EXTRAS AVAILABLE FOR PURCHASE THROUGH THE DEL E. WEBB DEVELOPMENT CO. SALES DEPARTMENT

- Special floor coverings... a wide selection of upgrade carpet from leading mills, parquet flooring and special sheet vinyls.
- Certain built-in General Electric Appliances.
- A full line of free-standing General Electric Kitchen and Laundry Appliances.

ENCORE

TWENTY ALL-NEW MODELS

Yes, in designing the Sun City West Model Home Collection, Webb experts in city planning, architectural design, engineering and construction reviewed every model ever built in Sun City. They extracted those planning concepts that most successfully satisfied the requirements and the preferences of people who have achieved the privileged goal of retirement.

With these proven concepts as starting blocks they de-

signed twenty brand new floor plans incorporating the most advanced structural and mechanical technology at every stage. Every plan was then refined to ensure that it provided the homeowner with the finest fixed appointments and optimum spaces for the arrangement of valued personal possessions and home furnishings. The exterior design phase was approached with like thoroughness. The goal was to achieve

MODE 1—SINGLE-FAMILY HOMES



The **SUNRISE**



The **AMERICANA**

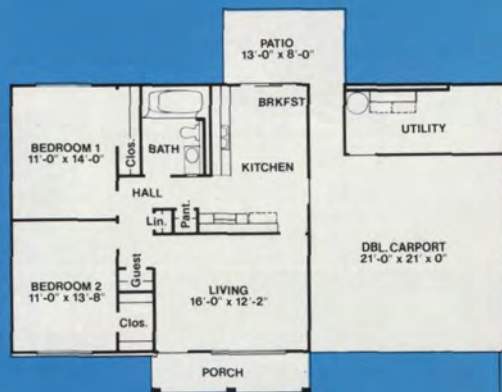
We reserve the right to change any materials, products or features in the homes at any time without notice.

WITH TIME-TESTED APPEAL

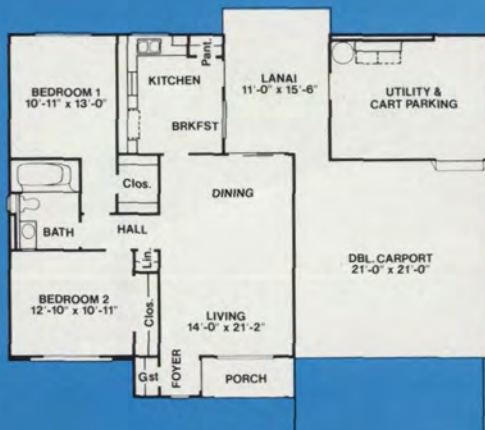
such a delightful variety of exterior elevations that the most confirmed individualist could select a home reflecting personal tastes. This has always been the Del Webb approach. That's why Sun City West's residential neighborhoods, like those in Sun City, exhibit a delightful diversity, avoiding completely the monotonous uniformity characteristic of so many master-planned communities.



A tour of the Sun City West Model Homes will give you hundreds of fresh ideas for the landscaping of your own home.



Optional Double Garage Extra



Optional Double Garage Extra

H-781B

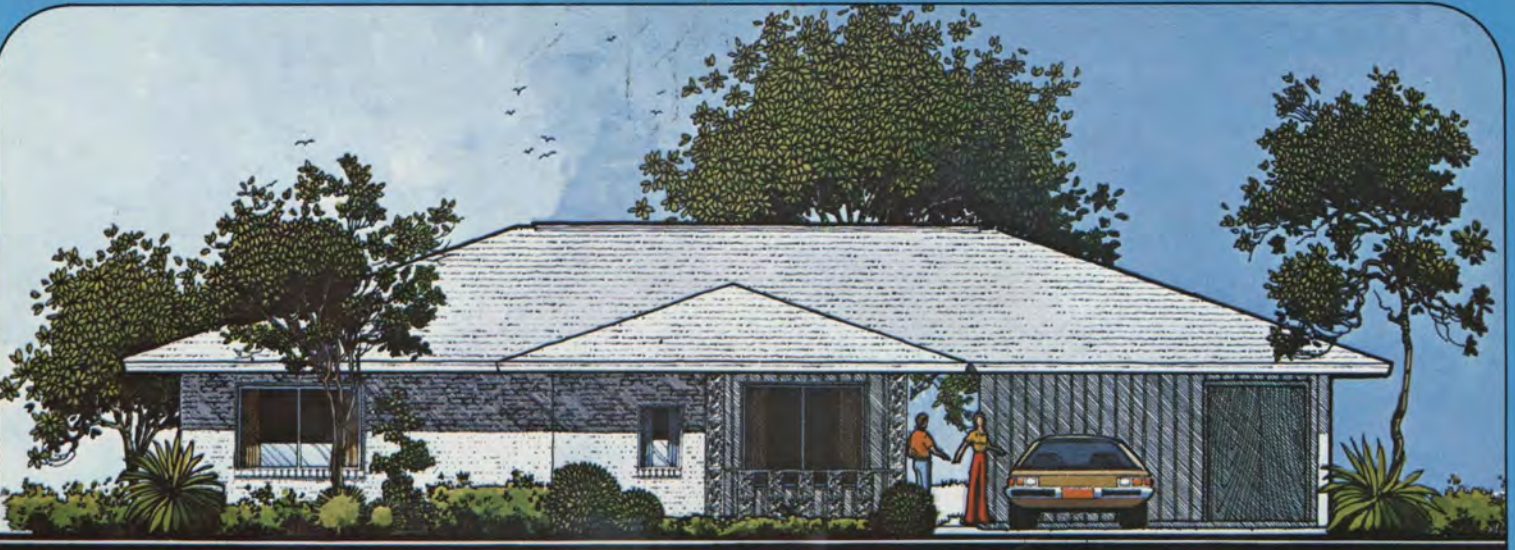
2 BEDROOMS • 1 BATH

Front Porch • Living Room • Kitchen with Breakfast Space
General Electric 30" slide-in range with
self-cleaning oven & glass door, in choice of colors • Patio
Utility Room • Double Carport (single carport, optional)

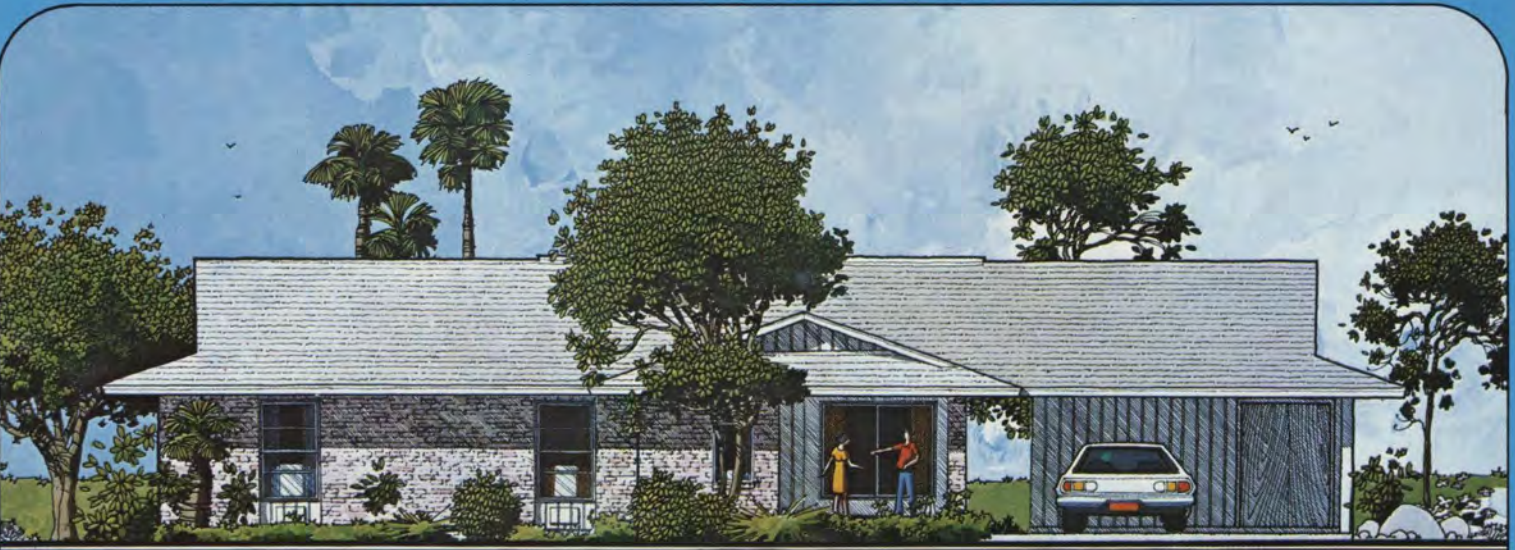
H-782A

2 BEDROOMS • 1 BATH

Front Porch • Foyer • Living Room • Dining Area
Kitchen with Breakfast Space • General Electric 30" slide-in
range with self-cleaning oven with window, in choice
of colors • Covered Lanai • Utility Room with Golf Cart Space
Double Carport (single carport, optional)



The DELTON



The BRADFORD



The ARCHER

We reserve the right to change any materials, products or features in the homes at any time without notice.



The CLASSIC

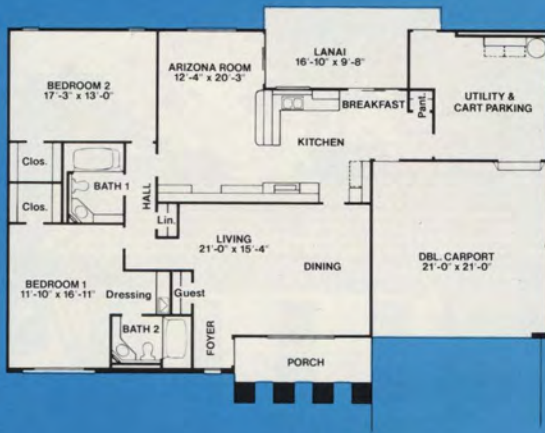


The AFTON

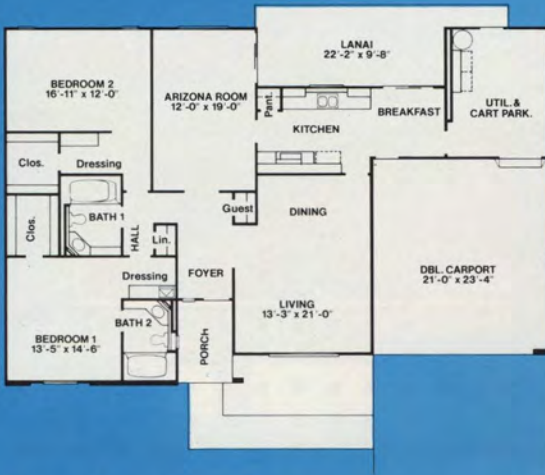


The HOMESTEAD

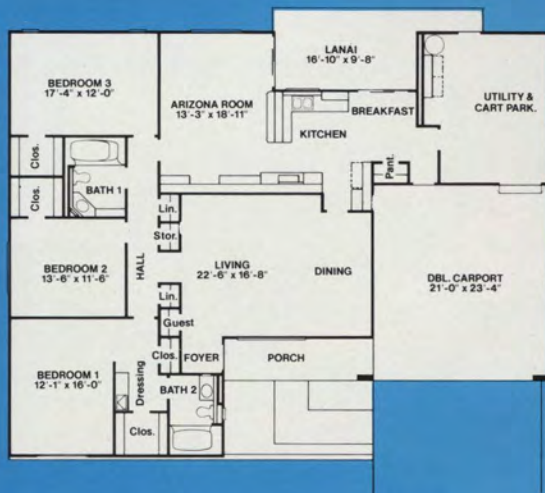
We reserve the right to change any materials, products or features in the homes at any time without notice.



Optional Double Garage Extra



Optional Double Garage Extra



Optional Double Garage Extra

Owing to normal construction tolerances, the room sizes may vary slightly.

H-786 B

2 BEDROOMS · 2 BATHS · ARIZONA ROOM

Front Porch · Foyer · Living Room · Dining Area
 Kitchen with Breakfast Space · General Electric built-in
 brushed chrome cook-top & self-cleaning wall oven
 with window, in choice of color · Dressing Area · Covered
 Lanai · Utility Room with Golf Cart Space
 Double Carport

H-787 B

2 BEDROOMS · 2 BATHS · ARIZONA ROOM

Front Porch · Foyer · Living Room · Dining Area
 Kitchen with Breakfast Space · General Electric built-in
 brushed chrome cook-top & self-cleaning wall oven
 with window, in choice of color · Dressing Areas · Covered
 Lanai · Utility Room with Golf Cart Space
 Double Carport

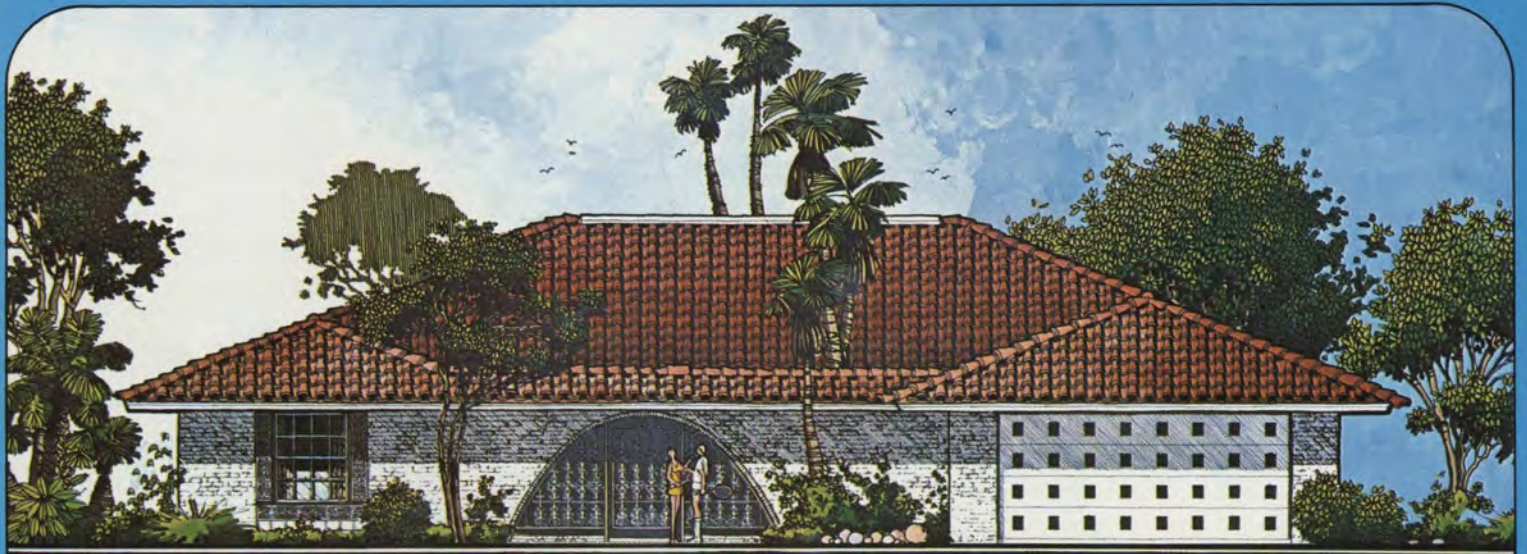
H-788 B

3 BEDROOMS · 2 BATHS · ARIZONA ROOM

Front Porch · Foyer · Living Room · Dining Area
 Kitchen with Breakfast Space · General Electric built-in
 brushed chrome cook-top & self-cleaning wall oven
 with window, in choice of color · Dressing Area · Covered
 Lanai · Utility Room with Golf Cart Space
 Double Carport



The LA SALLE

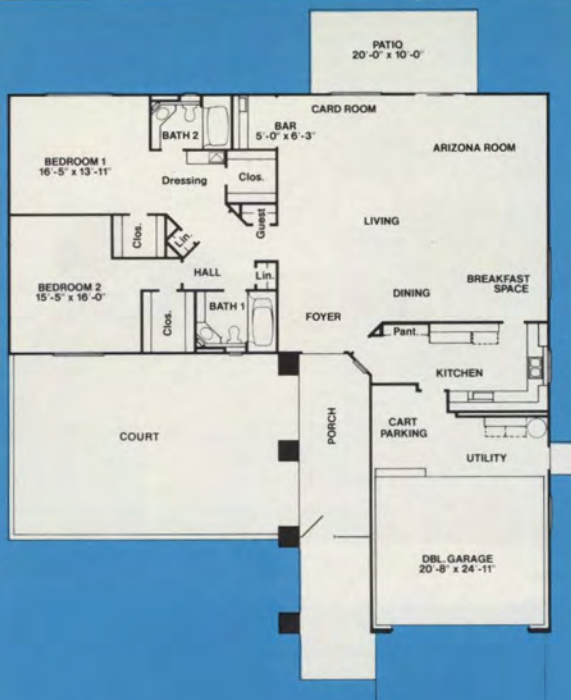


The SEVILLA



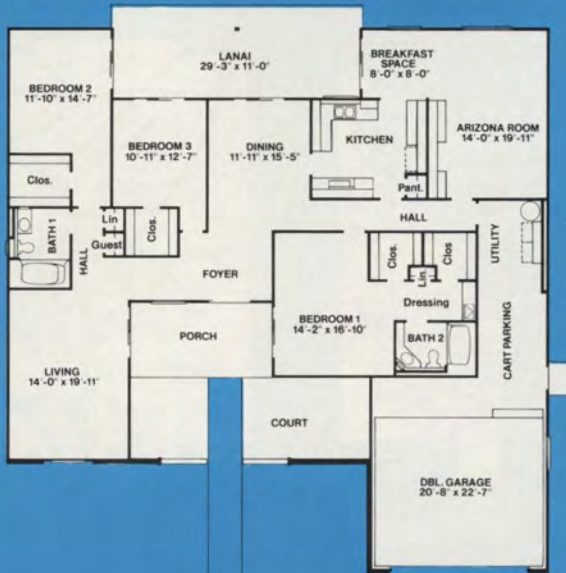
The Encore Collection showcases the latest fashions in architectural styling, landscaping and interior decoration.

We reserve the right to change any materials, products or features in the homes at any time without notice.



H-789 F
2 BEDROOMS · 2 BATHS · ARIZONA ROOM
PRIVATE COURT

Foyer · Living Room · Dining Area · Card Room Area with Built-in Bar · Kitchen with Breakfast Space
 General Electric built-in brushed chrome cook-top & double wall oven with windows (upper oven is self-cleaning)
 General Electric built-in dishwasher & compactor in choice of color · Dressing Area · Patio · Double Garage with Golf Cart Space and Utility Area



H-7810 S
3 BEDROOMS · 2 BATHS · ARIZONA ROOM
DINING ROOM · PRIVATE COURT

Front Porch · Foyer · Living Room · Kitchen with Breakfast Space · General Electric built-in brushed chrome cook-top & double wall oven with windows (upper oven is self-cleaning) · General Electric built-in dishwasher & compactor in choice of color · Dressing Area · Covered Lanai · Double Garage with Golf Cart Space and Utility Area



When you own a home in Sun City West you hold a deed (*a fee simple insured title*) to your property, just as you would to private property anywhere.

When you own a Duplex, Garden Apartment, or Patio Apartment in Sun City West you hold a deed to your residence and the ground it occupies, as well as, to an undivided interest in the common grounds within your complex. The only mortgage obligations or tax liabilities you incur are those relating to your own property. Exterior building and grounds maintenance expenses are pro-rated among all the owners within your complex through monthly assessments.



MODE 2—DUPLEX HOMES

PLAN D-7821-B



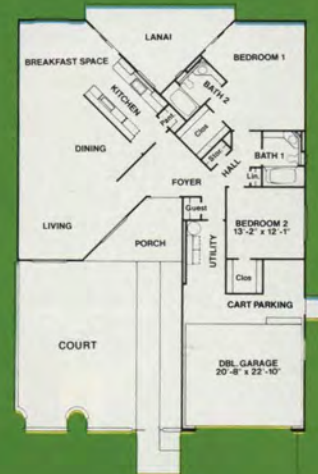
PLAN D-7822-B



PLAN D-7823-C



PLAN D-7824-C



Owing to normal construction tolerances, the room sizes may vary slightly.

D-7821-B
2 BEDROOMS
2 BATHS

Front Porch
Living Room
Dining Area
Kitchen with Breakfast Space
General Electric 30" slide-in range with self-cleaning oven with window, in choice of colors
Dressing Area
Covered Lanai
Utility Room
Single Carport

D-7822-B
2 BEDROOMS
2 BATHS

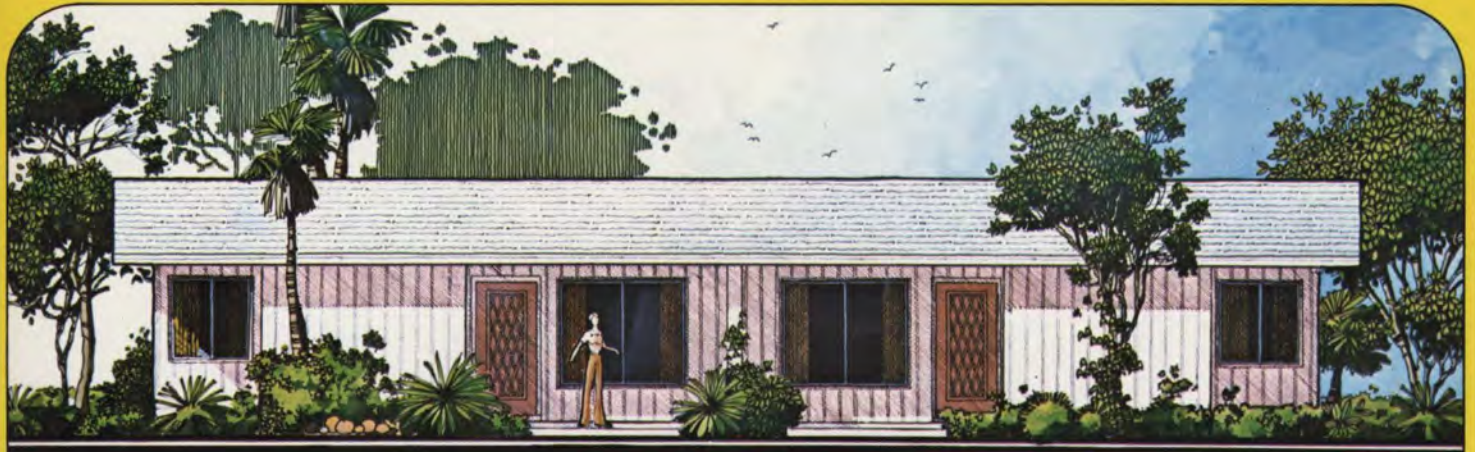
DINING ROOM
PRIVATE COURT
Front Porch
Foyer
Living Room
Kitchen with Breakfast Space
General Electric built-in brushed chrome cook-top & self-cleaning wall oven with window, in choice of color
Dressing Area
Covered Lanai
Double Garage with Golf Cart Space and Utility Area

D-7823-C
2 BEDROOMS
2 BATHS

ARIZONA ROOM
Front Porch
Foyer
Living Room
Dining Area
Kitchen with Breakfast Space
General Electric built-in brushed chrome cook-top & double wall oven with windows (upper oven is self-cleaning)
General Electric built-in dishwasher & compactor in choice of color
Dressing Area
Covered Lanai
Double Garage with Golf Cart Space and Utility Area

D-7824-C
2 BEDROOMS
2 BATHS

PRIVATE COURT
Front Porch
Foyer
Living Room
Dining Area
Kitchen with Breakfast Space
General Electric built-in brushed chrome cook-top & double wall oven with windows (upper oven is self-cleaning)
General Electric built-in dishwasher & compactor in choice of color
Covered Lanai
Double Garage with Golf Cart Space and Utility Area



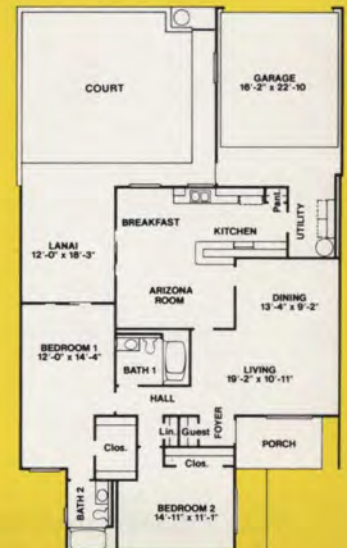
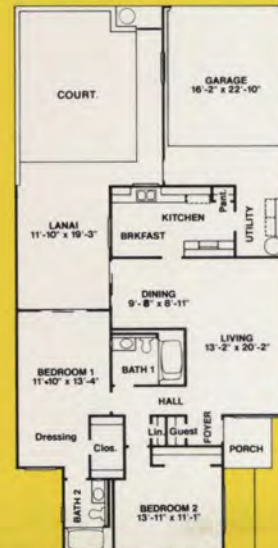
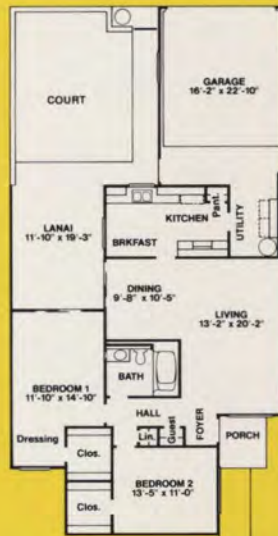
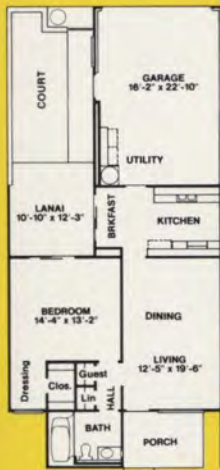
MODE 3—GARDEN APARTMENT HOMES

PLAN G-7831 A

PLAN G-7832 A

PLAN G-7833 A

PLAN G-7834 A



Owing to normal construction tolerances, the room sizes may vary slightly.

PLAN G-7831 A

1 BEDROOM

1 BATH

PRIVATE COURT

Front Porch

Living Room

Kitchen with Breakfast Space

General Electric 30" slide-in

range with self-cleaning oven

with window, in choice of colors

Dressing Area

Covered Lanai

Single Garage with Golf Cart

Space and Utility Area

PLAN G-7832 A

2 BEDROOMS

1 BATH

PRIVATE COURT

Front Porch

Foyer

Living Room

Dining Area

Kitchen with Breakfast Space

General Electric 30" slide-in

range with self-cleaning oven

with window, in choice of colors

Dressing Area

Covered Lanai

Single Garage with Golf Cart

Space and Utility Alcove

PLAN G-7833 A

2 BEDROOMS

2 BATHS

PRIVATE COURT

Front Porch

Foyer

Living Room

Dining Area

Kitchen with Breakfast Space

General Electric 30" slide-in

range with self-cleaning oven

with window, in choice of colors

Dressing Area

Covered Lanai

Single Garage with Golf Cart

Space and Utility Alcove

PLAN G-7834 A

2 BEDROOMS

2 BATHS

ARIZONA ROOM

PRIVATE COURT

Front Porch

Foyer

Living Room

Dining Area

Kitchen with Breakfast Space

General Electric 30" slide-in

range with self-cleaning oven

with window, in choice of colors

Dressing Area

Covered Lanai

Single Garage with Golf Cart

Space and Utility Alcove



MODE 4—PATIO APARTMENT HOMES

PLAN PA-7841 F



PLAN PA-7842 F



Owing to normal construction tolerances, the room sizes may vary slightly.

- PA-7841 F**
- 2 BEDROOMS**
- 2 BATHS**
- PRIVATE COURT**
- Front Porch
- Foyer
- Living Room
- Dining Area
- Kitchen with Breakfast Space
- General Electric Americana Hi/Low Range with self-cleaning oven & 2-level exhaust system in choice of color
- Dressing Area
- Covered Lanai
- Double Garage with Utility Alcove

- PA-7842 F**
- 2 BEDROOMS**
- 2 BATHS**
- ARIZONA ROOM**
- PRIVATE COURT**
- Front Porch
- Foyer
- Living Room
- Dining Area
- Kitchen with Breakfast Space
- General Electric Americana Hi/Low Range with self-cleaning oven & 2-level exhaust system in choice of color
- Dressing Area
- Covered Lanai
- Double Garage with Utility Alcove



ENCORE

The SUN CITY WEST MODEL HOME COLLECTION

MODEL	NAME	BEDROOMS	BATHS	AUTO STORAGE	BASIC PRICE**
H-781-B	The SUNRISE	2	1	Single Carport (1)	\$50,590 ●
H-782-A	The AMERICANA	2	1	Double Carport*	\$57,990
H-783-D	The DELTON	2	2	Double Carport*	\$64,490
H-784-B	The BRADFORD	3	2	Double Carport*	\$69,990
H-785-C	The ARCHER	2	2	Double Carport*	\$73,490
H-786-B	The CLASSIC	2	2	Double Carport*	\$77,990
H-787-B	The AFTON	2	2	Double Carport*	\$78,490
H-788-B	The HOMESTEAD	3	2	Double Carport*	\$85,490
H-789-F	The LaSALLE	2	2	Double Garage*	\$96,990
H-7810-S	The SEVILLA	3	2	Double Garage*	\$99,990
G-7831-A	GARDEN APARTMENT	1	1	Single Garage*	\$53,490
G-7832-A	GARDEN APARTMENT	2	1	Single Garage*	\$64,490
G-7833-A	GARDEN APARTMENT	2	2	Single Garage*	\$67,490
G-7834-A	GARDEN APARTMENT	2	2	Single Garage*	\$71,990
PA-7841-F	PATIO APARTMENT	2	2	Double Garage	\$81,490
PA-7842-F	PATIO APARTMENT	2	2	Double Garage	\$85,490
D-7824-C	DUPLEX	2	2	Double Garage*	\$91,490
D-7823-C	DUPLEX	2	2	Double Garage*	\$85,490
D-7822-B	DUPLEX	2	2	Double Garage*	\$79,490
D-7821-B	DUPLEX	2	2	Single Carport	\$69,990

(1) This Model shows a single carport which is an option. ● The basic price for the standard double carport model would be \$52,990.

* With Golf Cart Space

** The display models contain certain special features, furnishings, and landscaping treatments which are not included in the basic prices, or may not be available through the Del E. Webb Development Co. Please contact your Sales Counselor for more specific information.

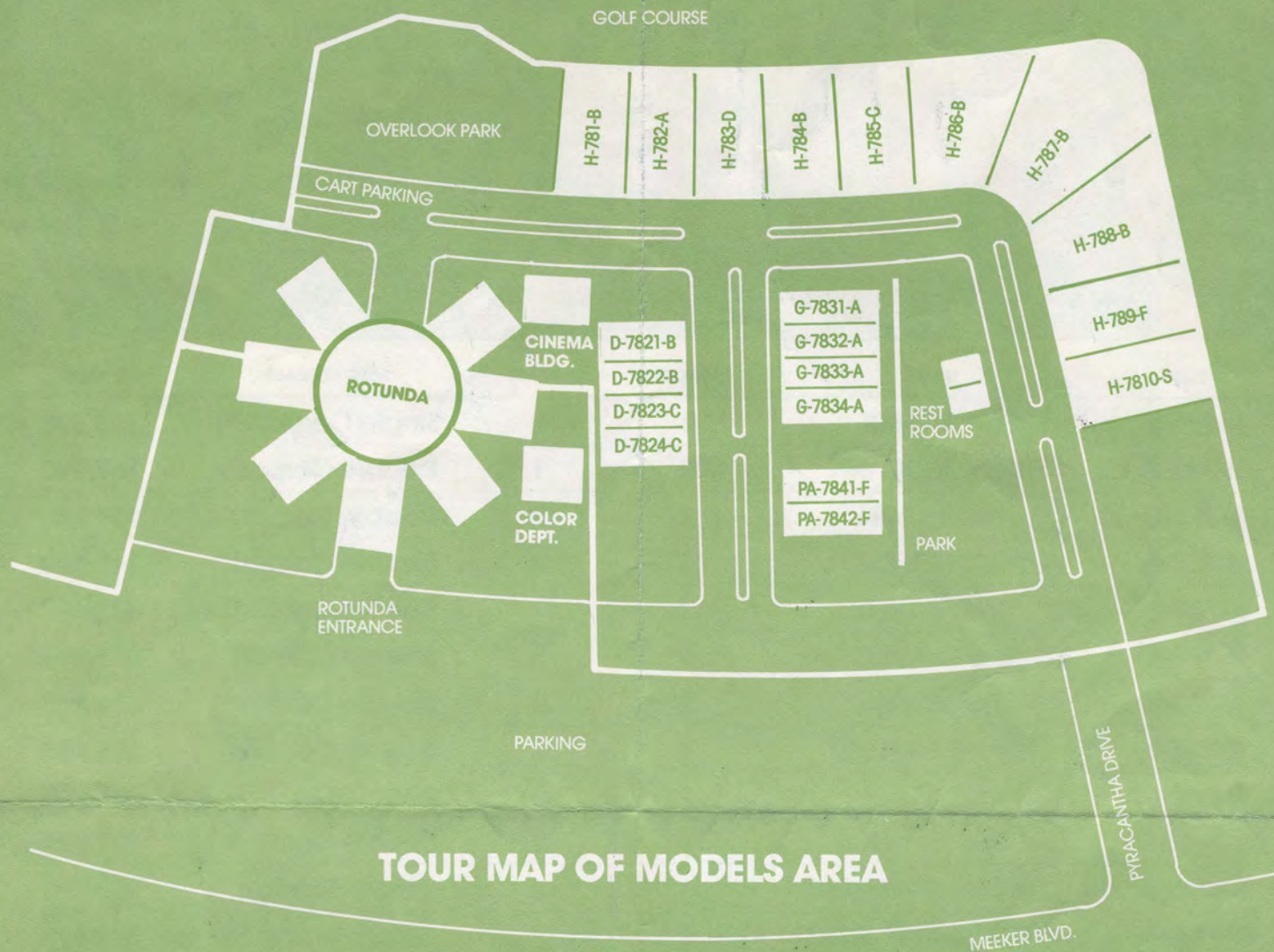
• Deed & Title Insurance Given on all Property.

• Street Lights & Underground Utilities Installed.

• All-Electric Heat Pump Forced Air Heating & Refrigerated Air-Conditioning and separate Evaporative Cooling Unit, included.

046R12-8

effective 12-15-78



TOUR MAP OF MODELS AREA

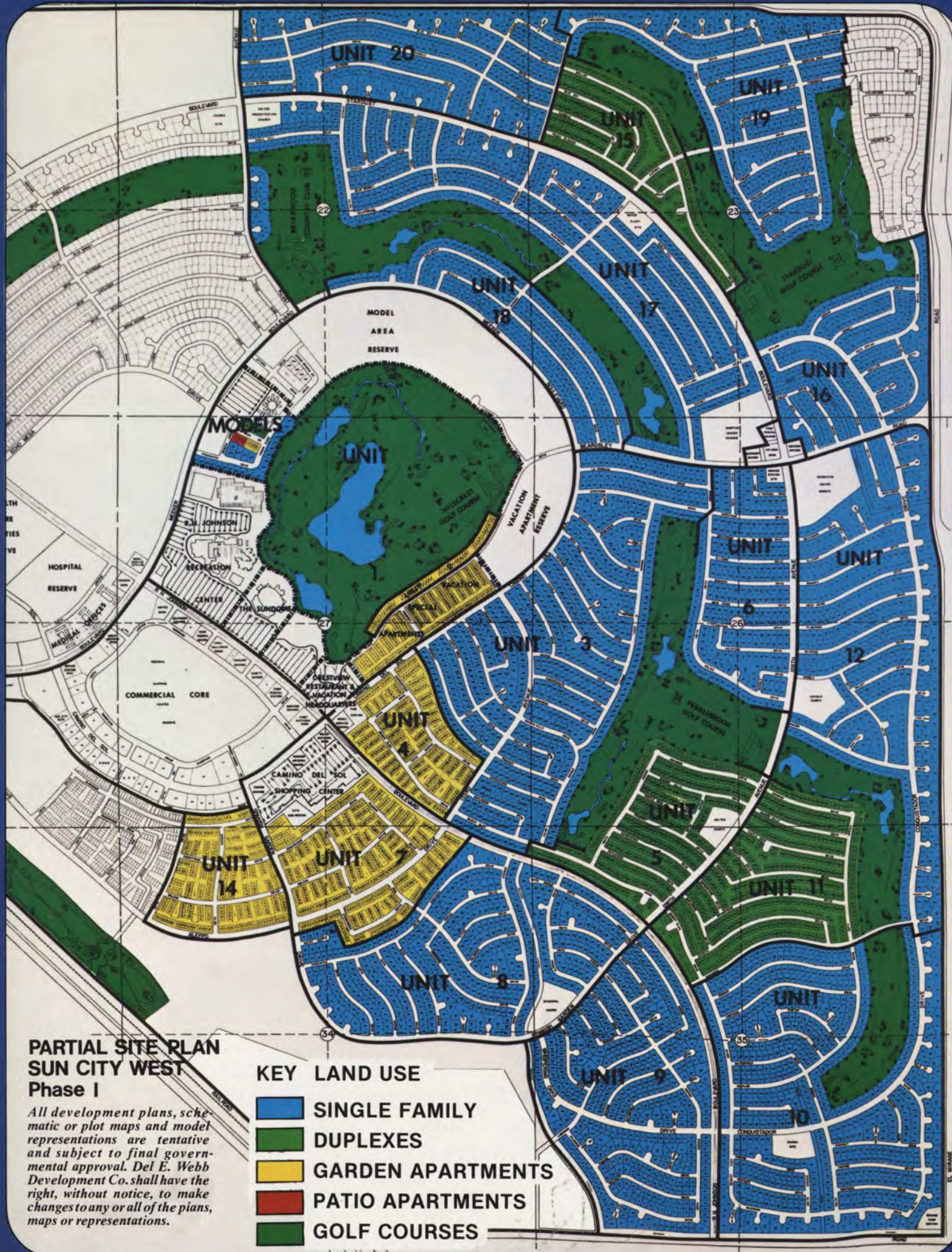
NOW SHOWING AT THE CINEMA

"THE STORY OF ARIZONA AND SUN CITY"

A beautiful color travelog narrated by
 Senator Barry Goldwater that depicts the scenic glories, history and people of Arizona.
 (viewing time—25 minutes)

Sun City  **West**
 STANDARD OF THE WORLD IN RESORT-RETIREMENT LIVING

EQUAL HOUSING OPPORTUNITY DEVELOPER



**PARTIAL SITE PLAN
SUN CITY WEST
Phase I**

All development plans, schematic or plot maps and model representations are tentative and subject to final governmental approval. Del E. Webb Development Co. shall have the right, without notice, to make changes to any or all of the plans, maps or representations.

- KEY LAND USE**
- SINGLE FAMILY
 - DUPLEXES
 - GARDEN APARTMENTS
 - PATIO APARTMENTS
 - GOLF COURSES



TREAT YOURSELF TO A SUN CITY WEST VACATION AND SAMPLE THE BEST IN RESORT-RETIREMENT LIVING

FOR ONE WEEK... December 16-April 30 Season
FOR TWO WEEKS... May 1-December 15 Season

- LUXURIOUS, COMPLETELY FURNISHED APARTMENTS.
- GUEST RECREATION CENTER MEMBERSHIP for "50+" vacationers.
- GOLF AT HILLCREST... A Complimentary round for each vacationer, included, on the LPGA Sun City Classic Course.
- YOU'LL BE just a short stroll from Sundome shows and a 10 minute drive from Brewer's exhibition baseball.
- YOU'LL BE JUST 15 MILES FROM EXCITING PHOENIX and an easy drive from the Grand Canyon, Indian Cliff Dwellings, Spanish Missions, historic Prescott, Tucson & Tombstone, glittering Las Vegas and romantic Old Mexico.

- THE RATES WILL DELIGHT YOU TOO... See the sheet entitled "ANSWERS TO YOUR QUESTIONS ABOUT THE VACATION SPECIAL PROGRAM" for rates and other details. If one is not included with this brochure, mark SEND VACATION DETAILS on the RESERVATION APPLICATION COUPON below and mail it today.

OFFER LIMITED: One vacationer must be 50 or over, and none under 18. Reservation applications processed on "first received-first confirmed" basis ONLY IF ACCOMPANIED BY DEPOSIT IN FULL. Prompt refund if booked to capacity. Rates same for 1 or 2 people. Roll-away bed charge added in event of third person.

DEL E. WEBB DEVELOPMENT CO.
P.O. BOX 1705/SUN CITY, ARIZONA 85372

- CHECK ENCLOSED.
Please reserve a Sun City West Vacation Apartment...
 DURING WINTER SEASON
One week, starting (any day of week) _____
 DURING SUMMER SEASON...
Two weeks, starting (any day of week) _____
 SEND VACATION DETAILS

Name(s) _____

Address(es) _____

City & State _____ Zip _____

0153 R12-0



DEL E. WEBB DEVELOPMENT CO.
A SUBSIDIARY OF
DEL E. WEBB CORPORATION



20030 MEEKER BLVD.
SUN CITY WEST, ARIZONA 85375
Equal Housing Opportunity Developer



ENCORE



Encore homes feature Solarcraft, the sun-powered water heating system from State Industries, Inc. at no extra cost.



In today's energy conscious society, one method of conserving energy is solar power. Several years ago, people thought little about its use. However, solar power is here now. It is one source of energy that will not diminish. When used to heat water, it reduces energy cost and consumption, and increases the resale value of a home. Realizing these advantages, Del E. Webb Development Co. has added the Solarcraft solar water heating system to the new Encore Collection of homes as standard equipment. This new Solarcraft system is designed, manufactured, and warranted for 10 years* by State Industries, the largest manufacturer of residential water heating equipment in the United States.

*Complete details of the warranty are available for inspection at the Sun City West Sales office, and are included with each heater.

Solarcraft®

- Pays for itself in fuel savings
- Appreciates the value of your home
- Guards against inflation
- Contributes to cleaner air
- Conserves energy
- Cuts your fuel bills

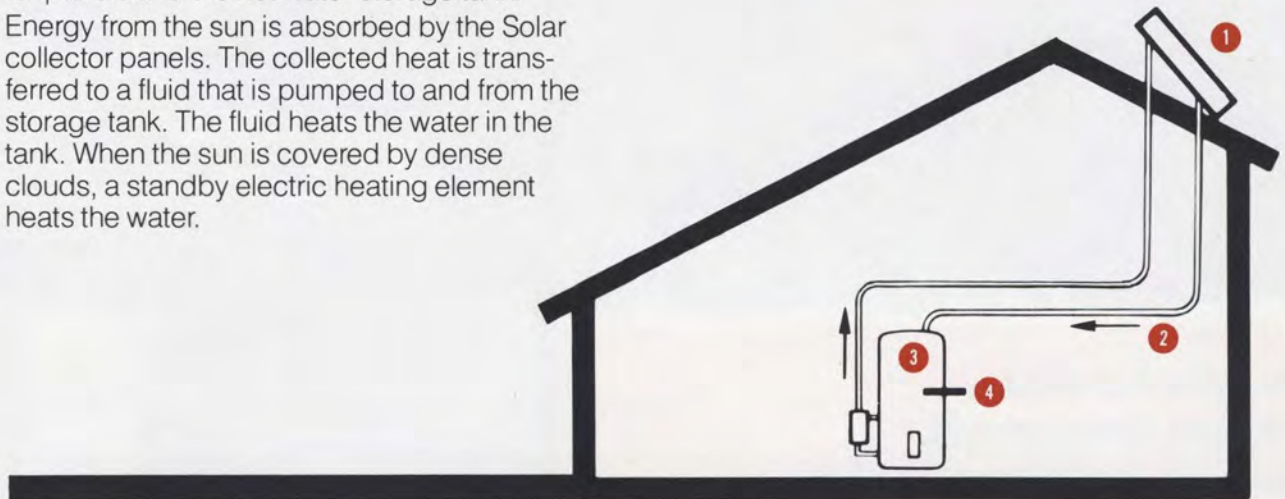
Sun City  West

STANDARD OF THE WORLD IN RESORT-RETIREMENT LIVING

Here's how Solarcraft® works

There are two major parts to the Solarcraft water heating system by State: the solar collector panels and the hot water storage tank.

Energy from the sun is absorbed by the Solar collector panels. The collected heat is transferred to a fluid that is pumped to and from the storage tank. The fluid heats the water in the tank. When the sun is covered by dense clouds, a standby electric heating element heats the water.



- 1** Solar collector panels gather the Sun's energy and convert it to heat.
- 2** The heat is transferred to distilled water which acts as a heat transfer fluid. This fluid is pumped to four heat-exchange chambers inside the tank.
- 3** The chambers hold the solar heated distilled water, transferring its heat to the potable water in the storage tank.
- 4** The Sandhog electric heating element automatically starts up on cloudy days to boost heating power.



state
INDUSTRIES, INC.

Ashland City, Tenn. 37015/Henderson, Nevada 89015