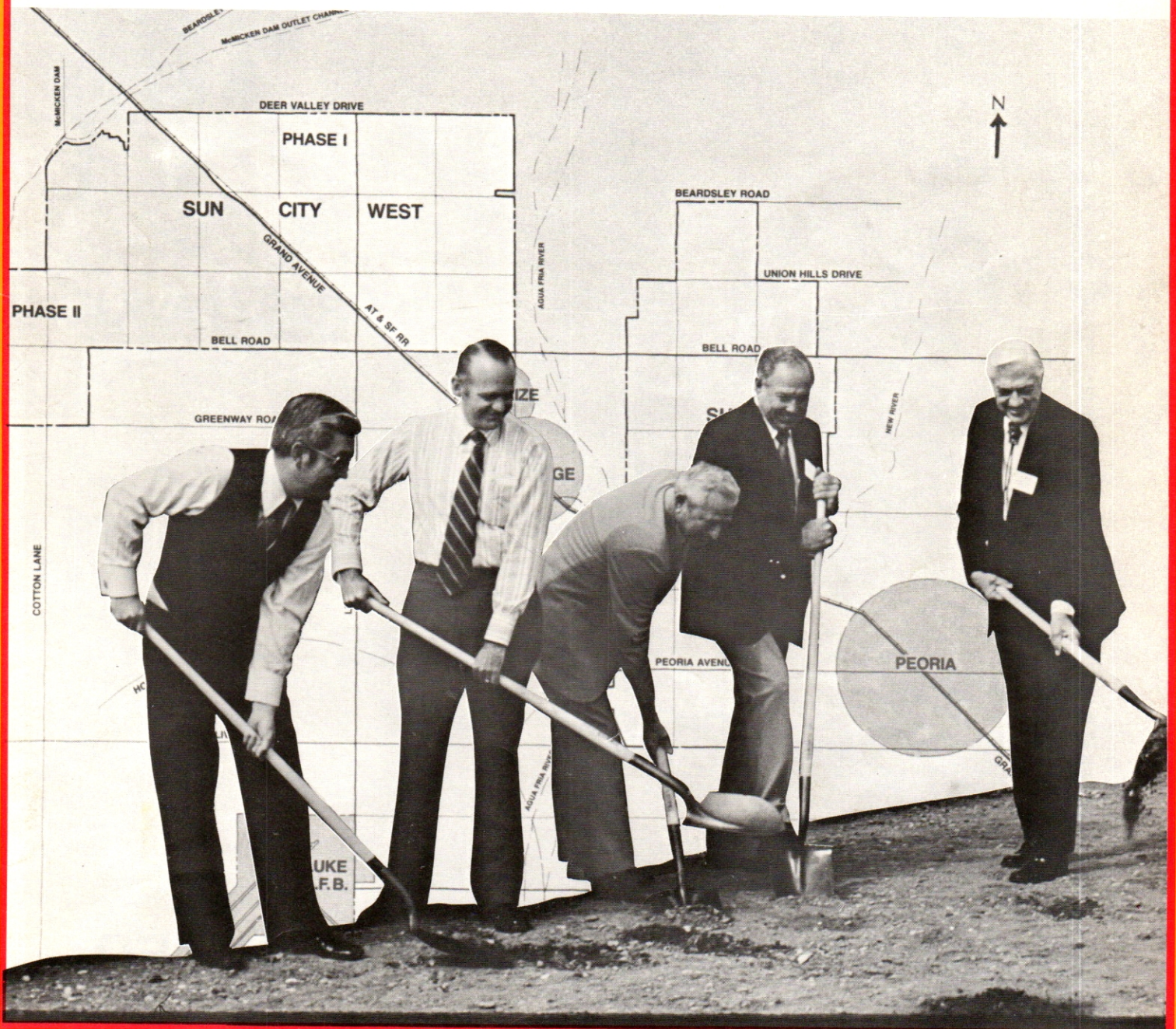


Sun City West

STANDARD OF THE WORLD IN RESORT-RETIREMENT LIVING

Del E. Webb Development Co. ★ Public Relations Dept. ★ P.O. Box 1705 ★ Sun City, Arizona 85372

GROUND BROKEN FOR SUN CITY WEST





ROBERT H. JOHNSON
WEBB CO. CHAIRMAN



Sun City Ministerial Association President Reverend Leslie Ross recited an excerpt from the liturgy for the dedication of a new home. Shown with Ross from left are DEVCO President John W. Meeker; J. G. Boswell, Vice-President Hank Raymond and U.S. Senator Dennis DeConcini.



ARIZONA GOVERNOR
WESLEY BOLIN



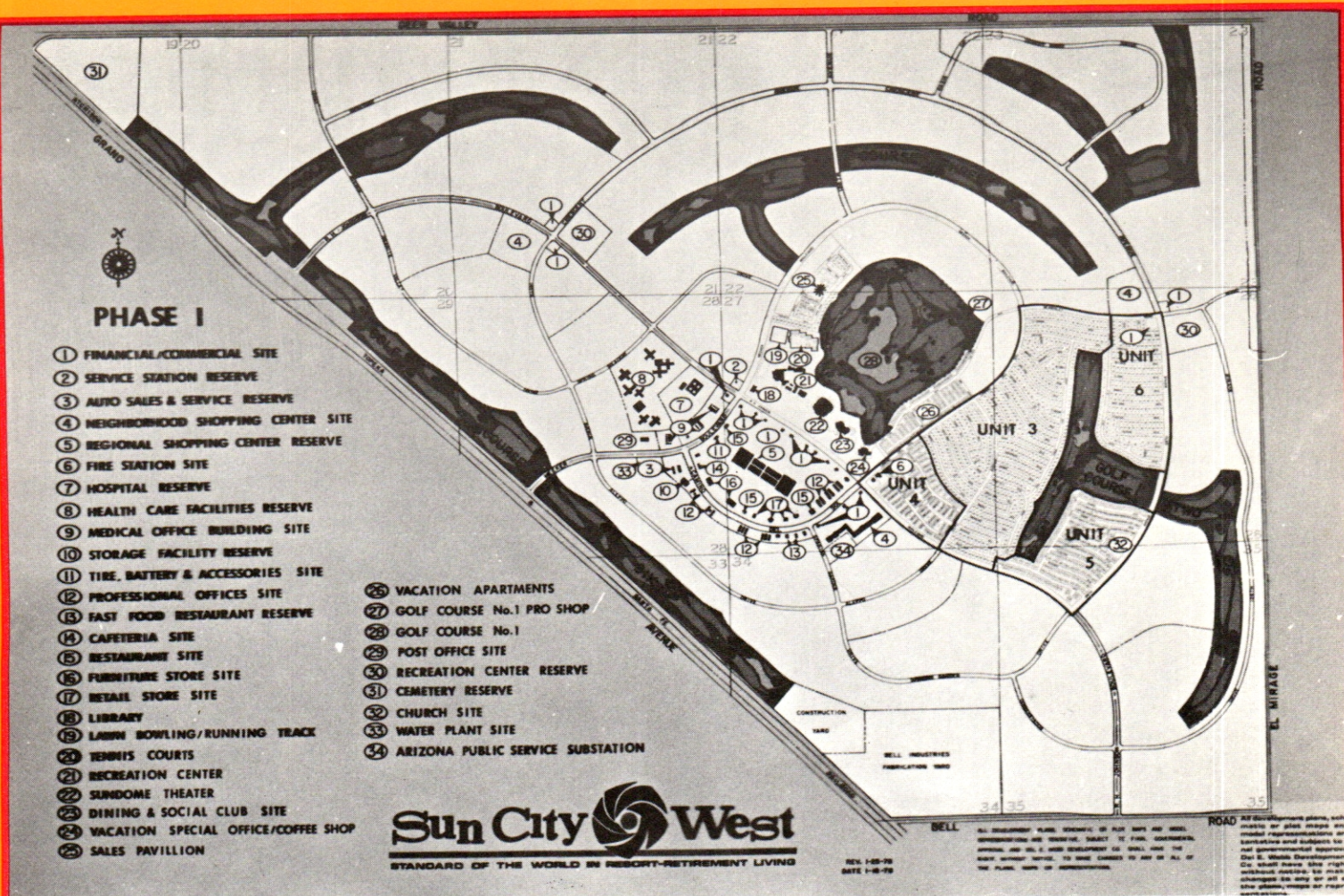
Groundbreaking ceremonies for Sun City West, the Del E. Webb Development Company's new 13,000-acre resort retirement community, were conducted February 15.

Del E. Webb Corporation Chairman and Chief Executive Officer Robert H. Johnson; J. G. Boswell Vice-President Hank Raymond; U.S. Senator Dennis DeConcini and Arizona Governor Wesley Bolin were among the more than 200 business and civic leaders in attendance.

Development Company President John W. Meeker, master of ceremonies and speaker, said that society is taking a fresh look at older Americans and that Sun City's message of active, meaningful retirement is being heard.

"Our residents continue to achieve, contribute and enjoy life to the fullest," Meeker said. "What an inspiration they are to others and to us."

Johnson pointed to the success of Sun City, noting that 10 years ago the community had a population of 12,000 . . . today it is Arizona's seventh largest city with a population of 43,000.



SUN CITY WEST PHASE I

Phase I of Sun City West will include 17,000 houses on a 5,700-acre tract.



SCALE MODEL

A 20 X 20 foot scale model depicting one square mile of Sun City West's Phase I shows one of the community's four shopping centers in the foreground. In the background are a golf course, one of the area's three recreation centers, the Sun Dome, the Dining and Social Club, Vacation Special Restaurant and new housing. Sun City West will have an enormous economic impact in the Valley. Construction costs, including all facilities, are expected to exceed \$1 billion. The community is expected to create approximately 55,880 jobs for Valley residents, with incomes from those jobs exceeding \$706 million.



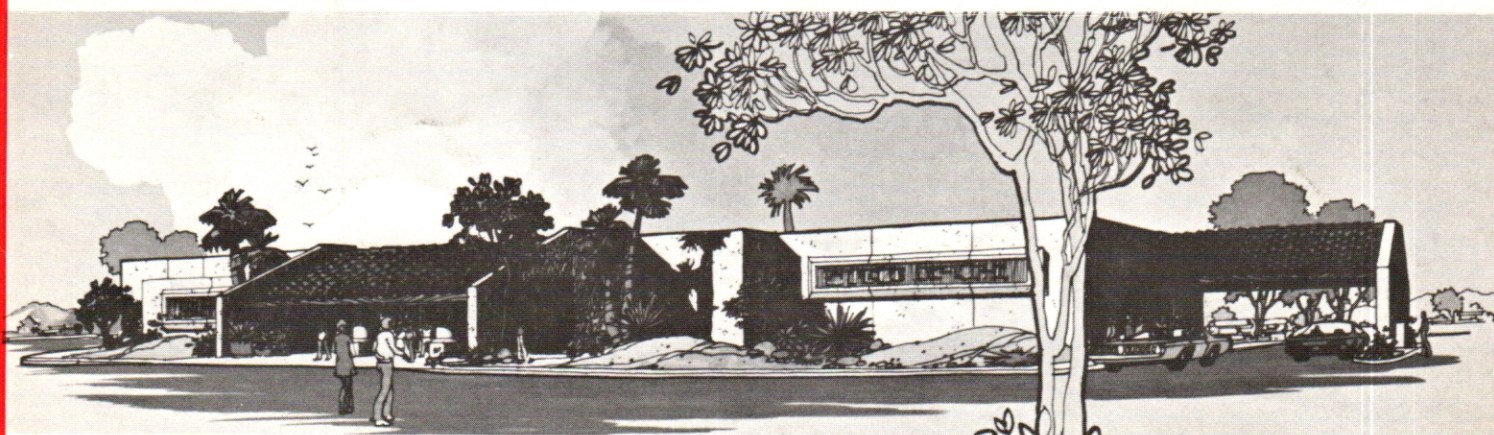
SHOPPING CENTER

Sun City West will have conveniently located neighborhood shopping centers.



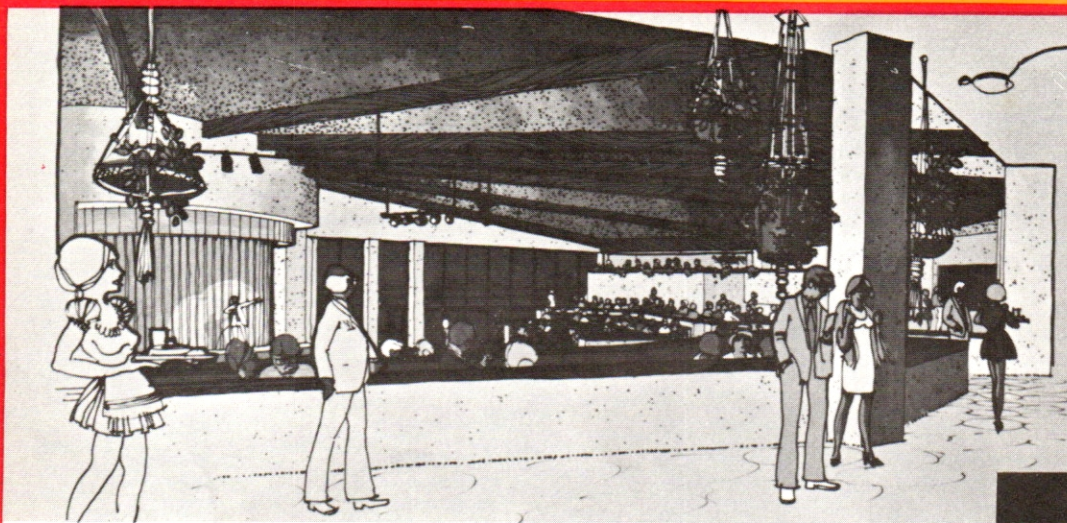
FIRE STATION

The fire station in Sun City West has been designed to complement the architecture of the surrounding community buildings.



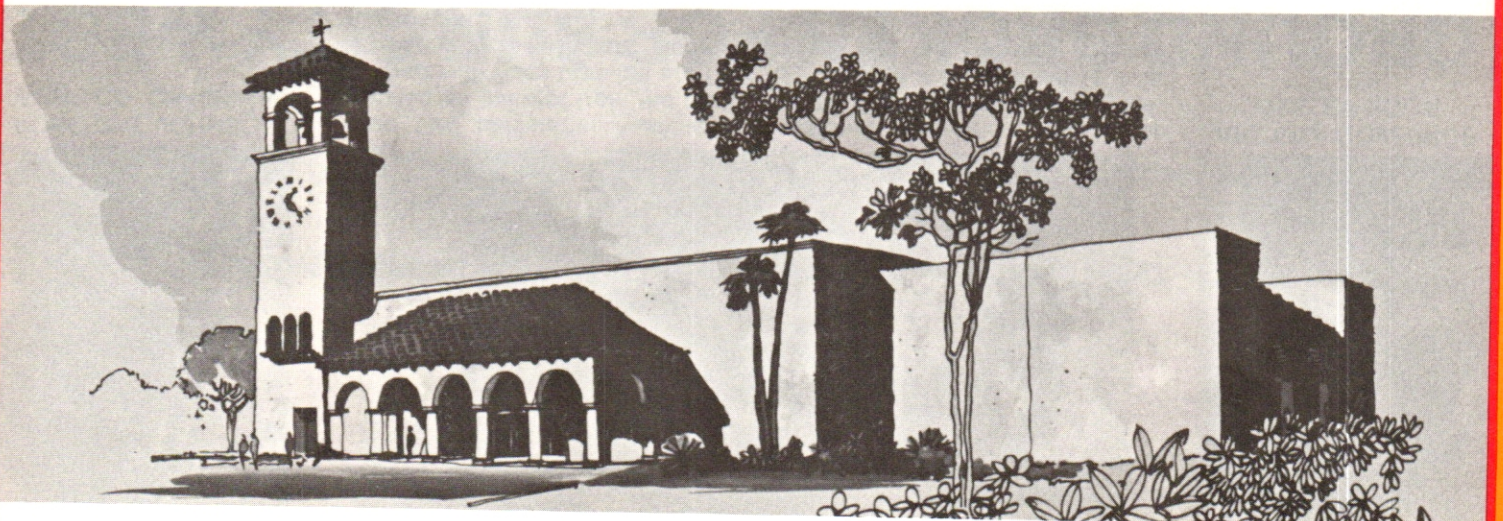
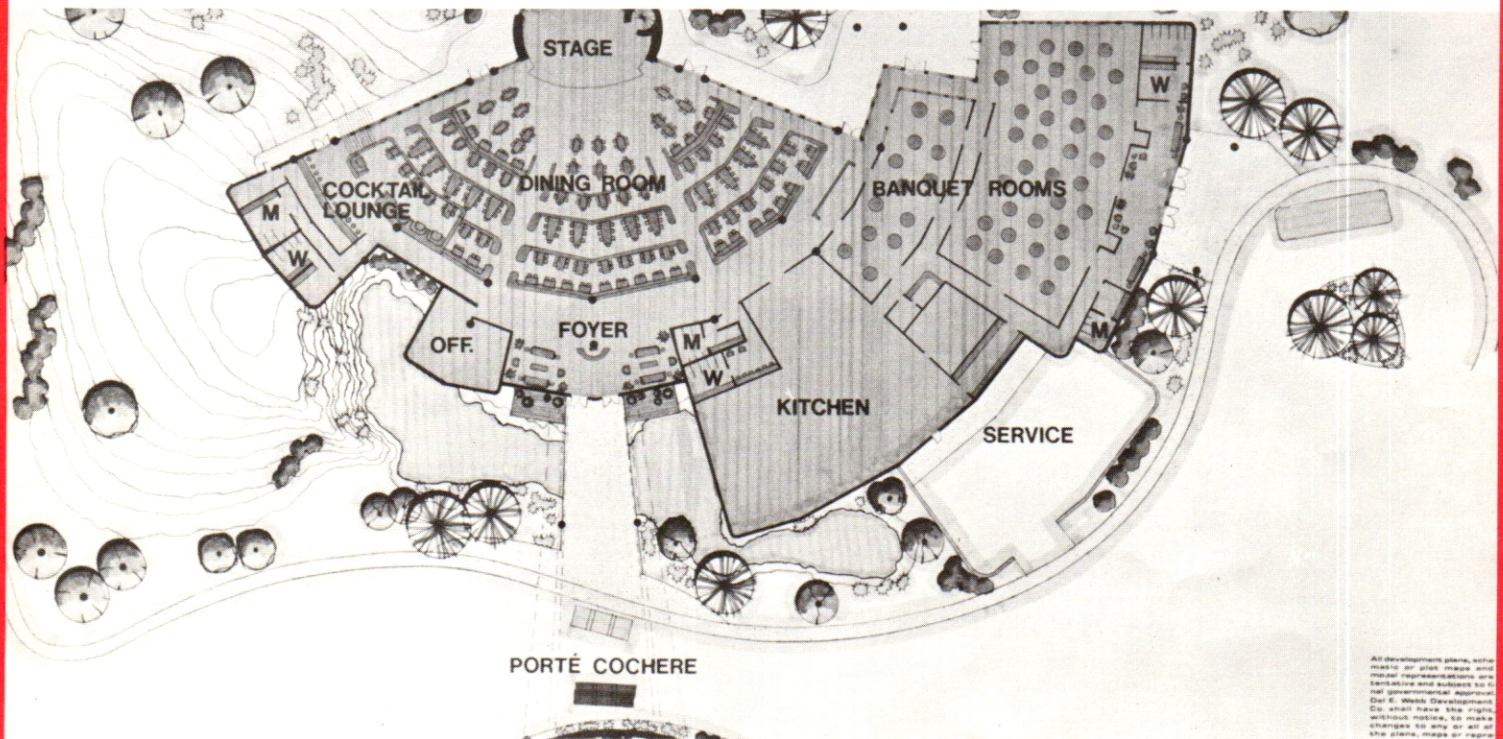
RESTAURANT

The Vacation Special Restaurant will overlook one of Sun City West's six 18-hole golf courses.



THE DINING & SOCIAL CLUB

Sun City West's Private Dining and Social Club will offer a panoramic view of the central golf course and Bradshaw Mountains. The clubhouse will contain a terraced dining room that seats 400, a theatre stage, dance floor, a stage-view cocktail lounge and a 350-seat ballroom which will be divisible to form a number of private dining rooms.



LIBRARY

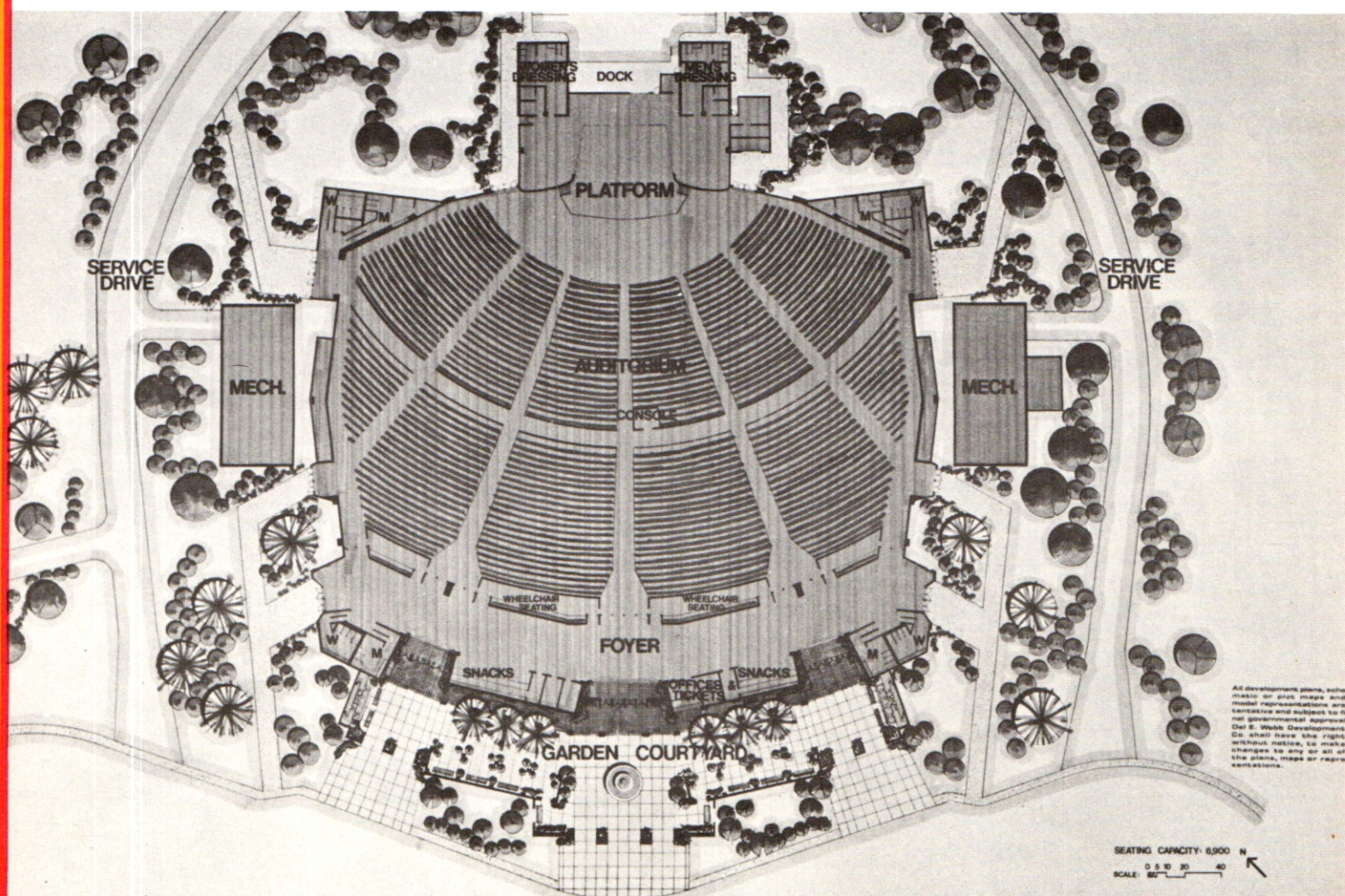
The Sun City West Library will feature stack accommodations for 40,000 volumes and a special reading room. The six-story bell tower will become a major Arizona landmark.

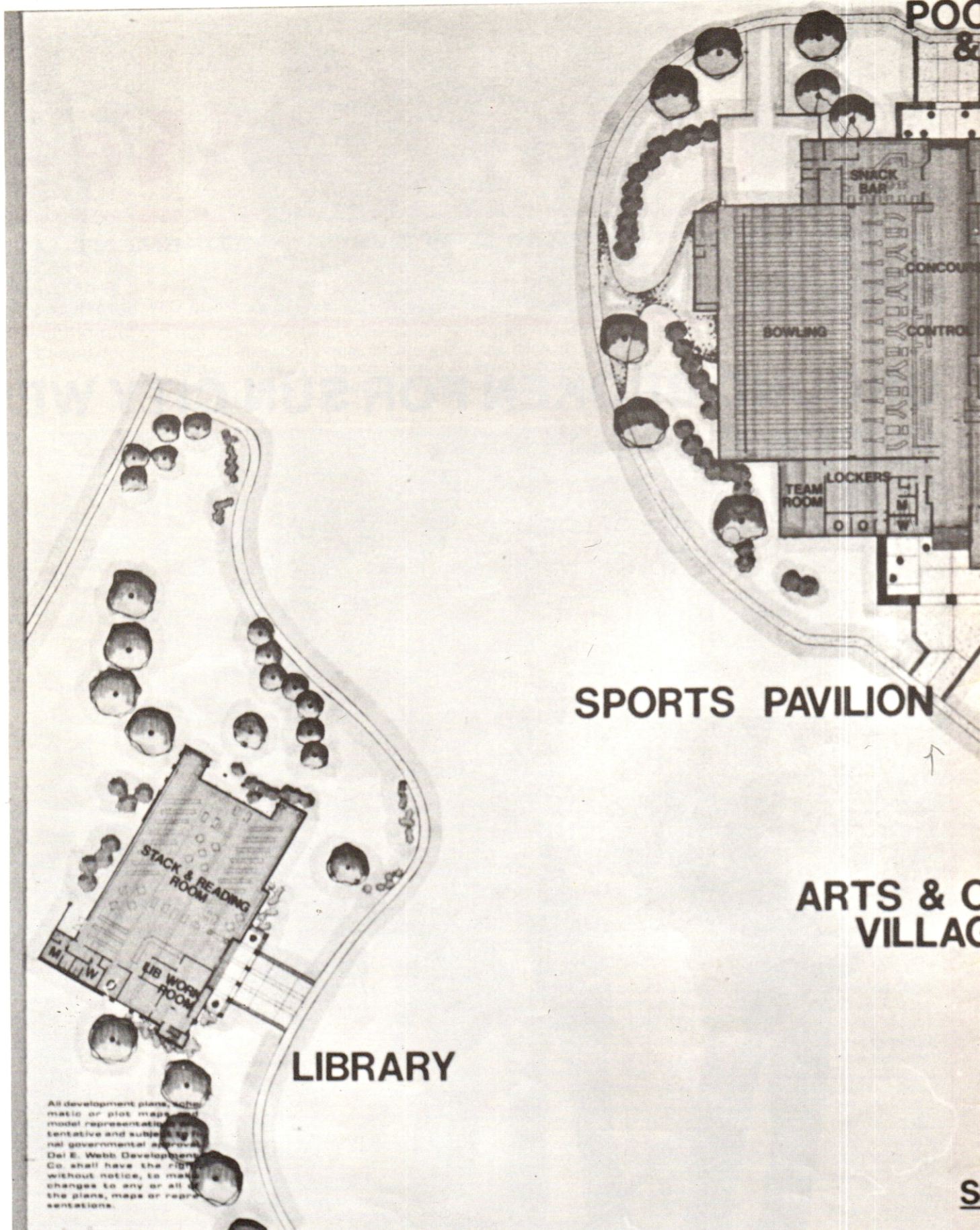


SUNDOME

SUNDOME CENTER FOR THE PERFORMING ARTS

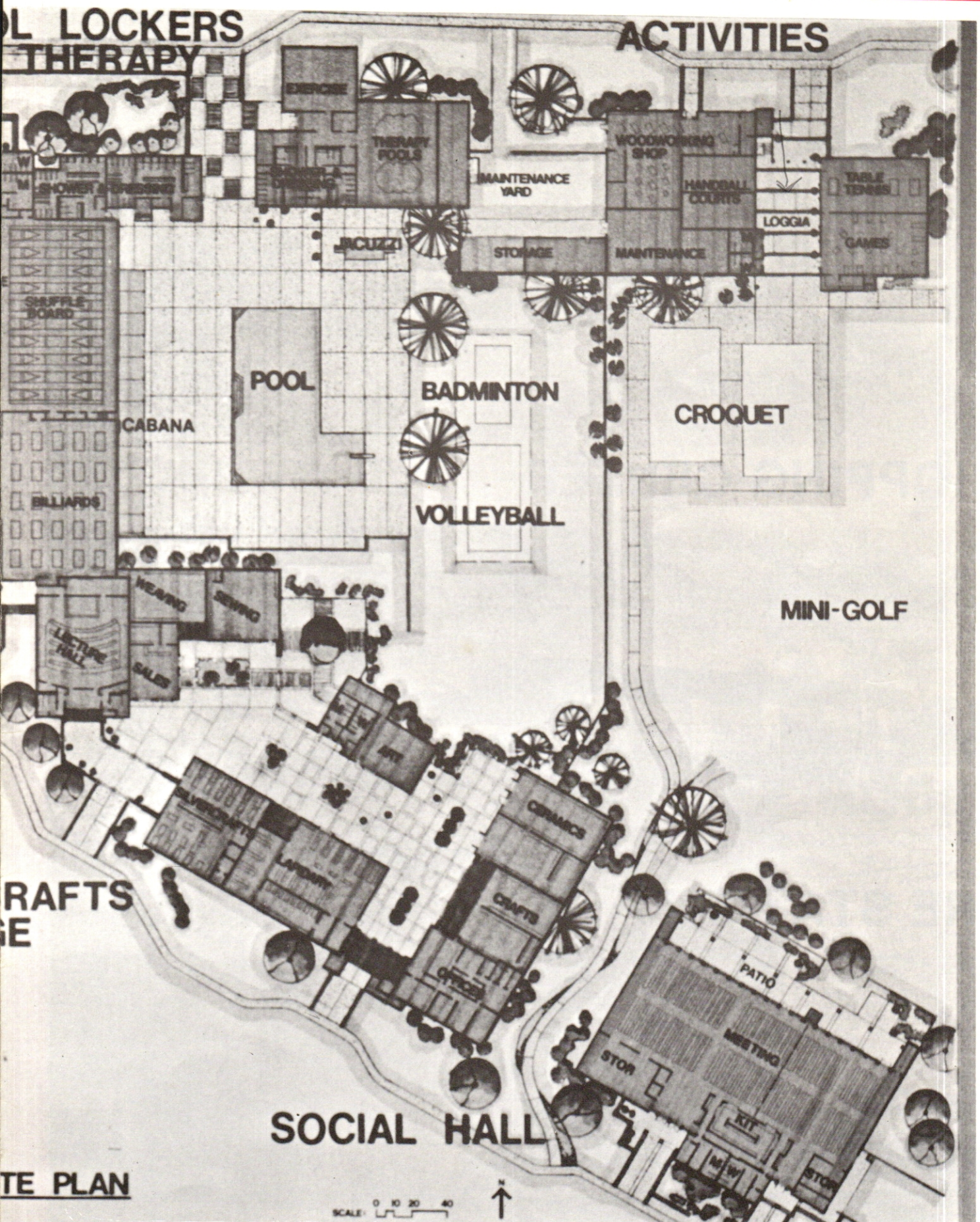
This multi-purpose auditorium will accommodate a variety of events and performances. The exterior combines the aspects of traditional Southwestern architecture with the latest in functional design. At the apex the roof will be as high as a four-story building. The Sundome will seat 6,800 people in air-conditioned comfort. The cushioned seats will be ramped for optimum visibility and ease of access. A sophisticated acoustical system will provide every seat in the house with the same sound presence as front row center.





JOHNSON RECREATION CENTER

Johnson
court
multi-
tion.



on Recreation Center will feature all the facilities available at Sun City Recreation Centers, plus platform tennis, a croquet and badminton area, a 1/4-mile running track and a penny arcade. The sports pavilion will feature a purpose exercise machine and the arts and crafts village will have an amphitheatre-type lecture hall for instruc-